



TRYMAN
OFFICE HUB

HISTORICAL CENTER
OF LIMASSOL

PLOT Nº.554



TRYMAN OFFICE HUB HISTORICAL CENTER OF LIMASSOL

Vasiliou Makedonos Street is one of the key arteries of Limassol's historical center, reflecting the city's architectural evolution during the early 20th century. Developed as part of Limassol's urban expansion between the 1910s and 1920s, the street is lined with neoclassical façades, colonial-era townhouses, and elegant stone buildings that echo the spirit of that era.

Today, Vasiliou Makedonos blends historic charm with a modern rhythm, offering a vivid glimpse into Limassol's layered architectural heritage.



TRYMAN OFFICE HUB

The **TRYMAN OFFICE HUB** will contribute to the revitalization of the historical center of Limassol, providing a unique office environment for any company.

Located in the ever evolving city centre, it is an integration of a listed building preservation together with a new and contemporary extension. It complements and reflects the rich architecture of the Architectural Heritage District with its urban vernacular aesthetics, earthy colours, all with a contemporary touch.

TRYMAN
OFFICE HUB

The ground floor combines modern covered parking and communal zones with a fully restored listed building that houses premium office space.

CAURI-GLOBAL PAYMENTS MADE

1001
54

Project information

UNITS	ENCLOSED LISTED BUILDING (OFFICES)	ENCLOSED NEW BUILDING (OFFICES)	COVERED VERANDA	ENCLOSED COMMUNAL	COVERED PARKING AREA	UNCOVERED PARKING AREA	UNCOVERED ROOF	TOTAL
BASEMENT GROUND	0.00	0.00	0.00	55.90	284.00	0.00	0.00	339.90
FLOOR	77.40	0.00	0.00	30.30	147.40	84.80	0.00	339.90
FIRST FLOOR	70.80	138.95	10.35	24.60	0.00	0.00	0.00	244.70
SECOND FLOOR	0.00	138.95	10.35	14.70	0.00	0.00	0.00	164.00
ROOF GARDEN	0.00	31.90	0.00	30.30	0.00	0.00	47.40	109.60
ROOF	0.00	0.00	0.00	0.00	0.00	0.00	177.70	177.70
TOTAL	148.20sq	309.80sq	20.70sq	155.80sq	431.40sq	84.80sq	225.10sq	1,375.80sq

BASEMENT

- Parking area: 306m²
- Enclosed communal: 33,65m²

GROUND FLOOR

- Covered parking area: 142,90m²
- Uncovered parking area: 87,90m²
- Enclosed communal: 33,65m²
- Enclosed listed building(offices): 77,40m²

FIRST FLOOR

- Enclosed communal: 45,50m²
- Enclosed new building (offices): 134,30m²
- Covered veranda: 9,65m²
- Enclosed listed building (offices): 65,20m²

SECOND FLOOR

- Enclosed communal: 31,85m²
- Enclosed new building (offices): 134,30m²
- Covered veranda: 9,65m²

ROOF

- Enclosed communal: 32,90m²
- -Enclosed new building (offices): 28,55m²
- -Uncovered roof: 114,30m²

Total enclosed new building area **428,85m²**

Total enclosed listed building area **154,80m²**

Total no. Parking spaces: **11**

Total covered areas : **1.287,70m²**

Location benefits

- Historical city Centre
- Near by Anexartias
- Shopping Street
- Close to all necessary amenities
- 200m to the Seaside



Why Limassol?

Limassol is the second largest city in Cyprus and the southern most of Europe. Known among the cities of Cyprus as providing attractive business locations, rich nightlife and cultural heritage, Limassol is also the largest port of the island and one of the largest in the Eastern Mediterranean.

Limassol is a relatively new city, although traces have been found in its area that testify that it has been inhabited since ancient times. It is located in the southern part of Cyprus, built amphitheatrically on the Bay of Akrotiri, between two ancient cities: Amathus in the east and Kourion to the west.



A Historic Address Reimagined

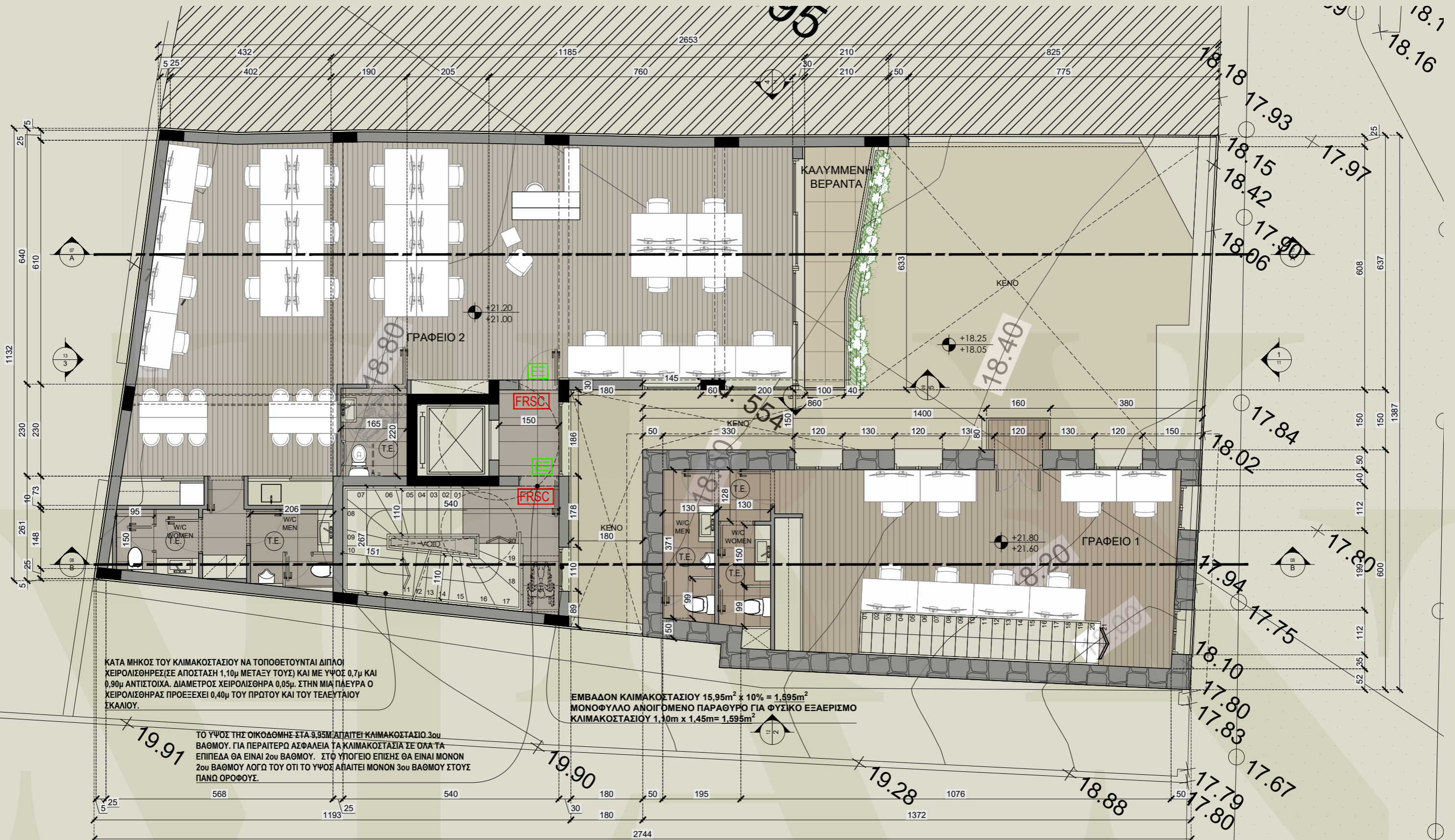
Located in the heart of Limassol's vibrant historic center, the building occupying Plot 554 once formed part of the early 20th-century urban fabric of Vasiliou Makedonos Street. Limassol experienced rapid civic growth and architectural evolution. The building shared the same neoclassical and colonial-era architectural traits characteristic of its neighbors—stone façades, elegant balconies, and rectangular symmetrical layouts.

Location - Vasilliou Makedonos Street - Plot No. 544/ Plot Area 355 m²





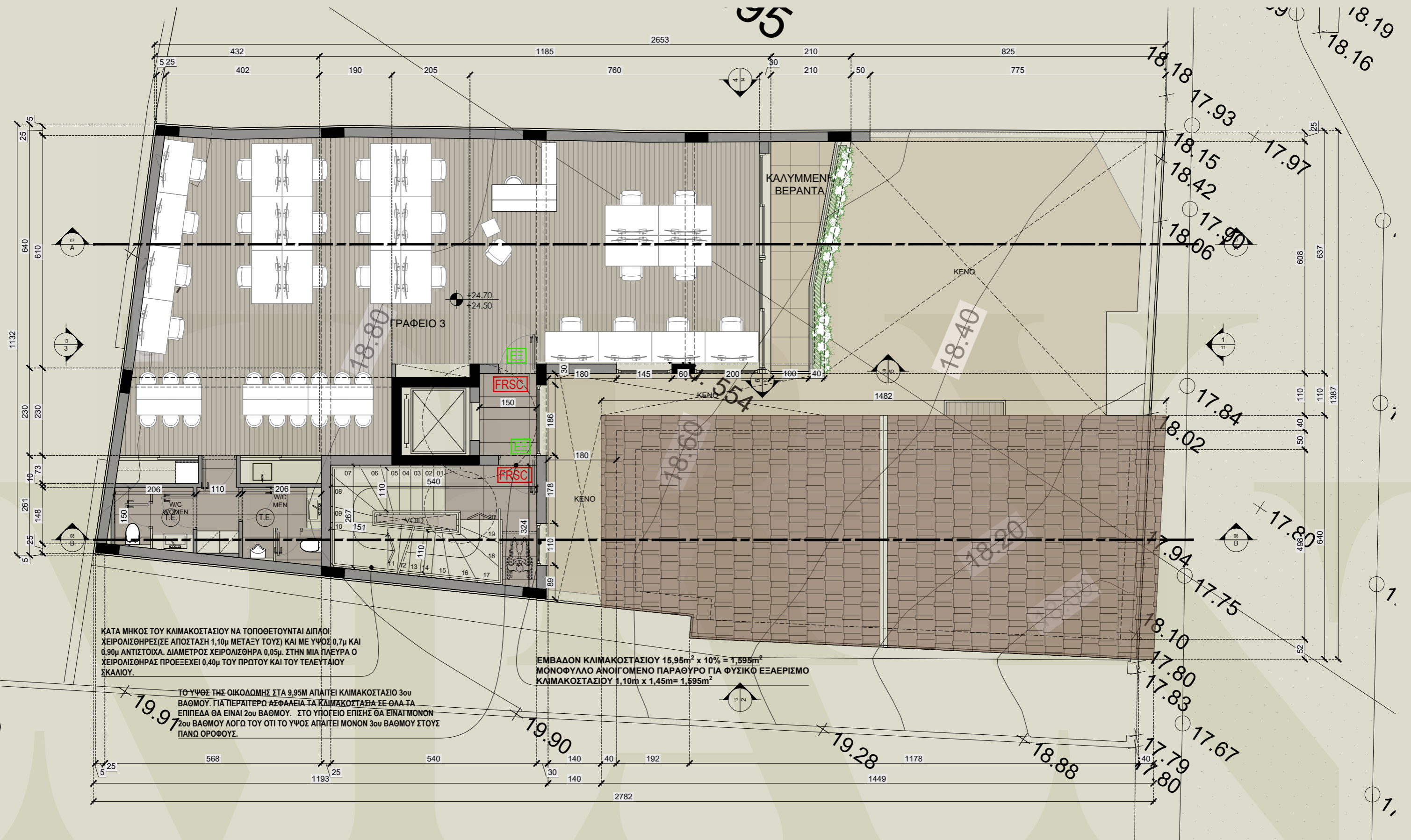
1st FLOOR PLAN



2



2nd FLOOR PLAN



ΚΑΤΑ ΜΗΚΟΣ ΤΟΥ ΚΛΙΜΑΚΟΣΤΑΣΙΟΥ ΝΑ ΤΟΠΟΘΕΤΟΥΝΤΑΙ ΔΙΠΛΟΙ ΧΕΙΡΟΛΙΣΘΗΡΕΣ (ΣΕ ΑΠΟΣΤΑΣΗ 1,10μ ΜΕΤΑΞΥ ΤΟΥΣ) ΚΑΙ ΜΕ ΥΨΟΣ 0,7μ ΚΑΙ 0,90μ ΑΝΤΙΣΤΟΙΧΑ. ΔΙΑΜΕΤΡΟΣ ΧΕΙΡΟΛΙΣΘΗΡΑ 0,05μ. ΣΤΗΝ ΜΙΑ ΠΛΕΥΡΑ Ο ΧΕΙΡΟΛΙΣΘΗΡΑΣ ΠΡΟΞΕΧΕΙ 0,40μ ΤΟΥ ΠΡΩΤΟΥ ΚΑΙ ΤΟΥ ΤΕΛΕΥΤΑΙΟΥ ΣΚΑΛΙΟΥ.

ΤΟ ΥΨΟΣ ΤΗΣ ΟΙΚΟΔΟΜΗΣ ΣΤΑ 9,95Μ ΑΠΑΙΤΕΙ ΚΛΙΜΑΚΟΣΤΑΣΙΟ 3ου ΒΑΘΜΟΥ. ΓΙΑ ΠΕΡΑΙΤΕΡΩ ΑΣΦΑΛΕΙΑ ΤΑ ΚΛΙΜΑΚΟΣΤΑΣΙΑ ΣΕ ΟΛΑ ΤΑ ΕΠΙΠΕΔΑ ΘΑ ΕΙΝΑΙ 2ου ΒΑΘΜΟΥ. ΣΤΟ ΥΠΟΓΕΙΟ ΕΠΙΣΗΣ ΘΑ ΕΙΝΑΙ ΜΟΝΟΝ 2ου ΒΑΘΜΟΥ ΛΟΓΩ ΤΟΥ ΟΤΙ ΤΟ ΥΨΟΣ ΑΠΑΙΤΕΙ ΜΟΝΟΝ 3ου ΒΑΘΜΟΥ ΣΤΟΥΣ ΠΑΝΩ ΟΡΟΦΟΥΣ.

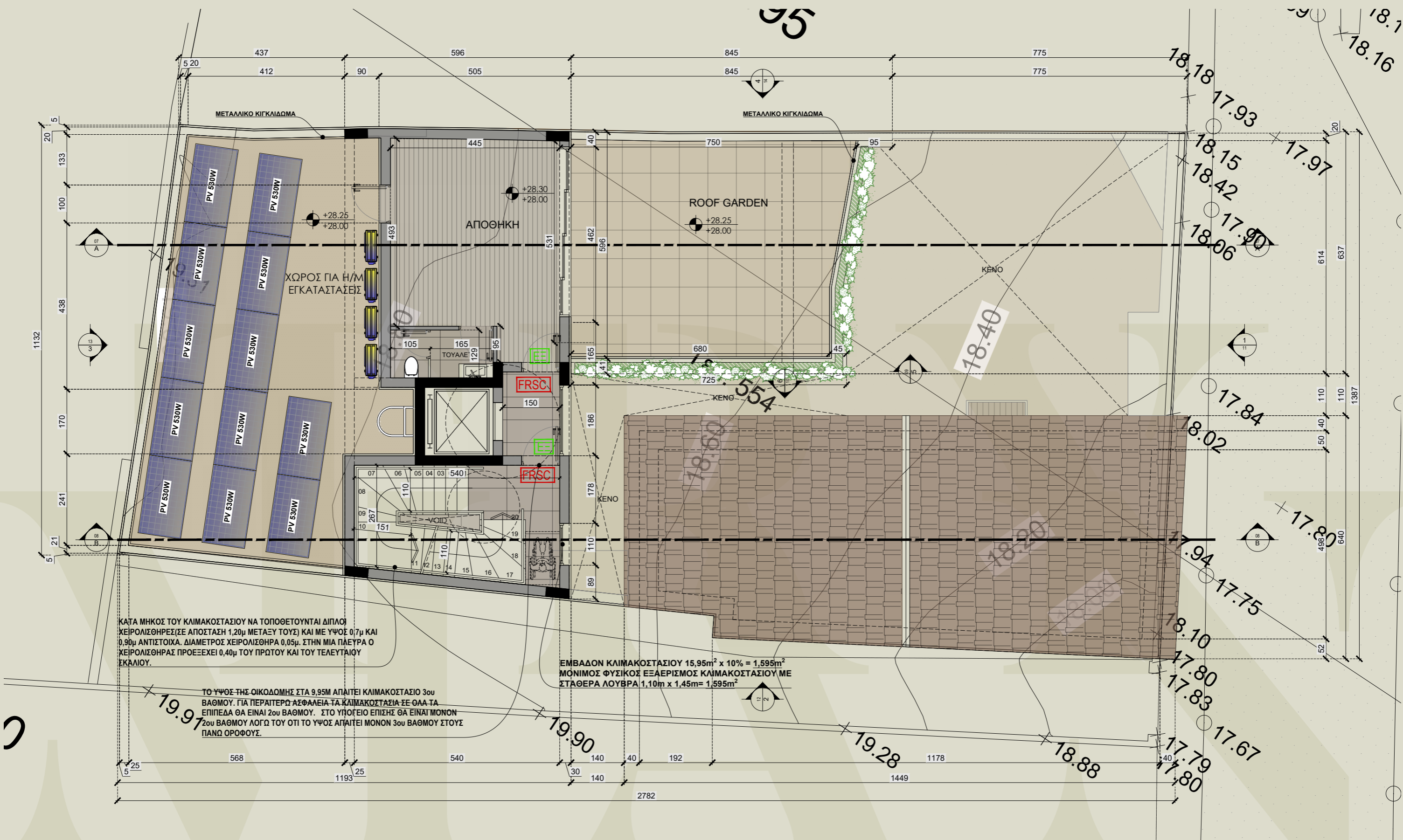
ΕΜΒΑΔΟΝ ΚΛΙΜΑΚΟΣΤΑΣΙΟΥ $15,95m^2 \times 10\% = 1,595m^2$
 ΜΟΝΟΦΥΛΛΟ ΑΝΟΙΓΟΜΕΝΟ ΠΑΡΑΦΥΡΟ ΓΙΑ ΦΥΣΙΚΟ ΕΞΑΕΡΙΣΜΟ
 ΚΛΙΜΑΚΟΣΤΑΣΙΟΥ $1,10m \times 1,45m = 1,595m^2$

2

1,



ROOF FLOOR PLAN I CONFERENCE



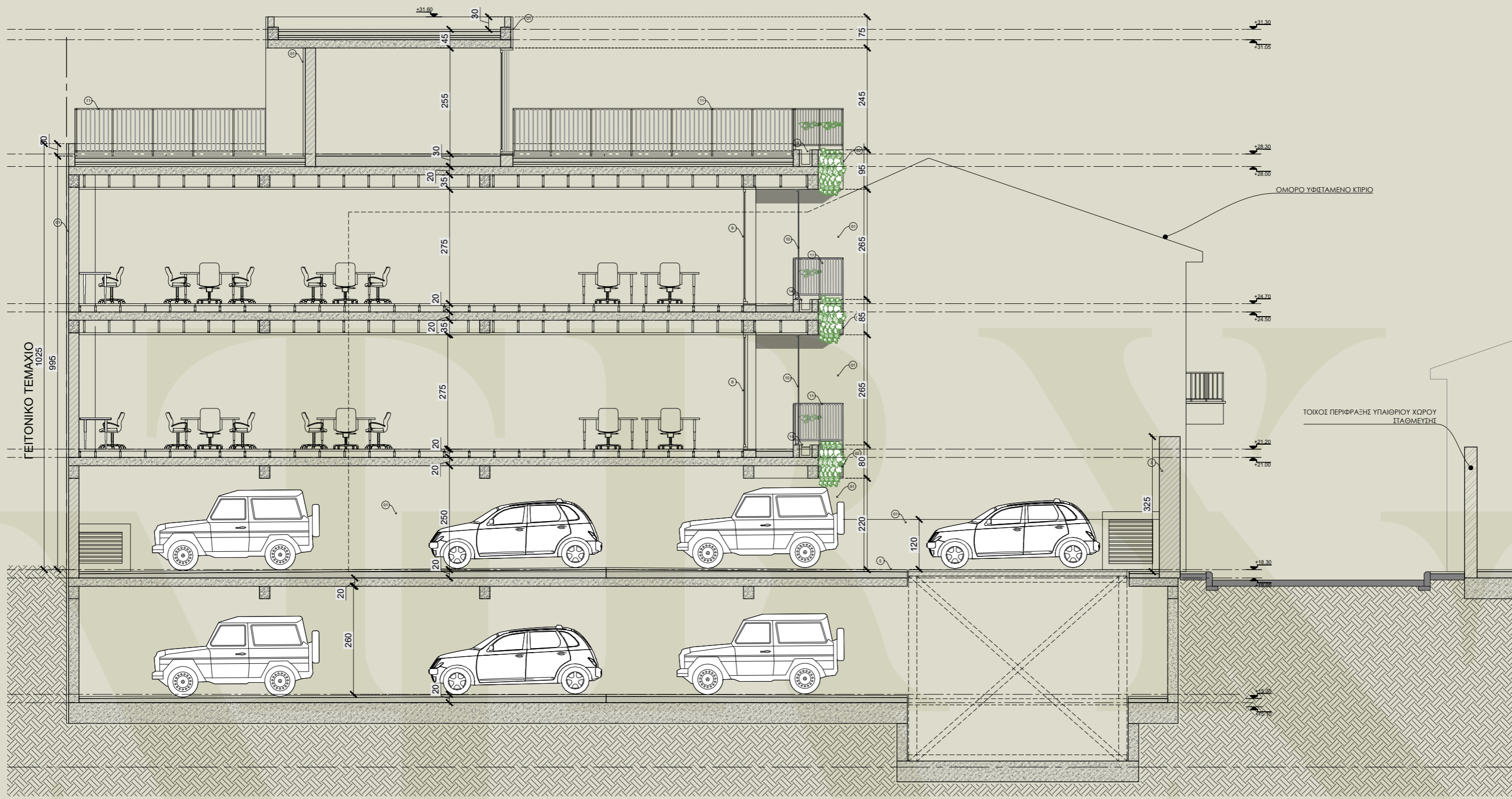


TRYMAN BUSINESS HUB is located specifically in the Architectural Heritage District of Limassol. This area is very popular and desirable for people from all walks of life, be it tourists, students, young families, professionals looking for a quiet stroll or the hip and trendy cafes and bars after work. Close to Anexartisias Street and Agiou Andreou Street, which is the oldest high-street shopping location in Limassol, and only a few steps from the beach front and main pedestrian promenade of Limassol. Other attractions of the city within very close proximity are the newly built Old Port, Limassol Marina and Medieval Caste District.

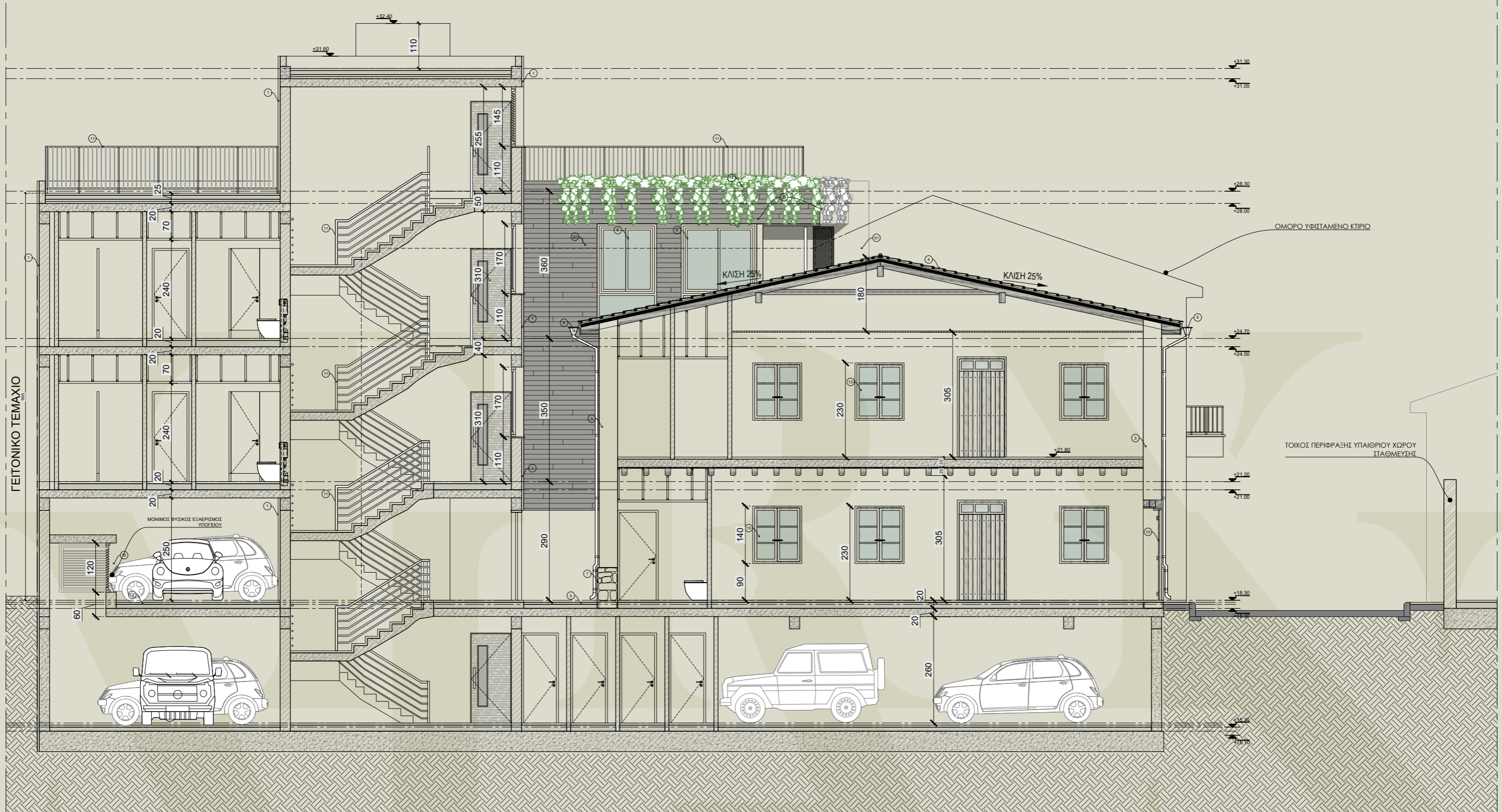


Elegant & Minimal

The building embraces a calm, earthy elegance through a palette of natural materials and textures. Soft sage green tones blend with raw stone finishes and warm wood accents, while marble surfaces and glass elements add a refined modern touch.



TOMH A-A



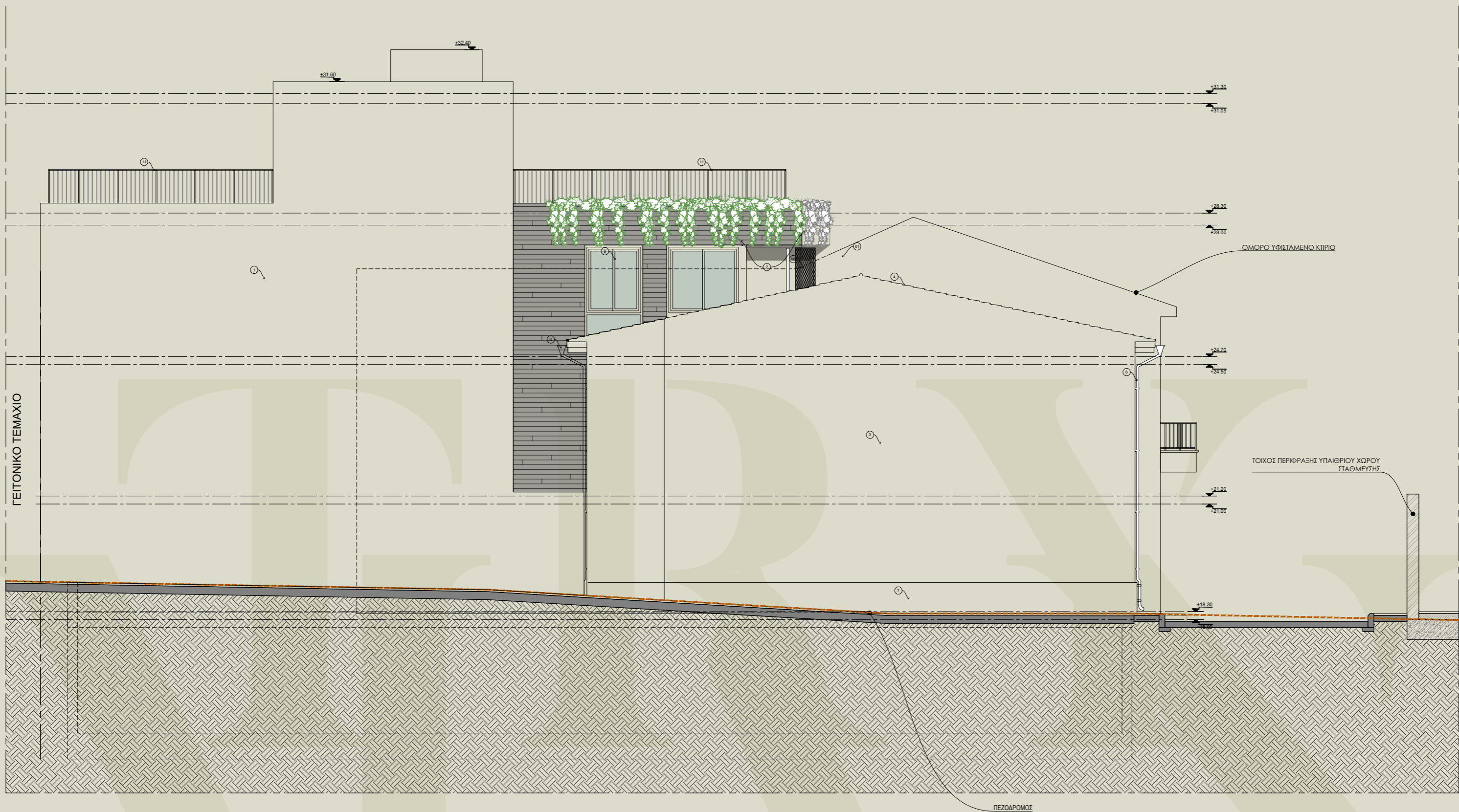
ΤΟΜΗ Β-Β



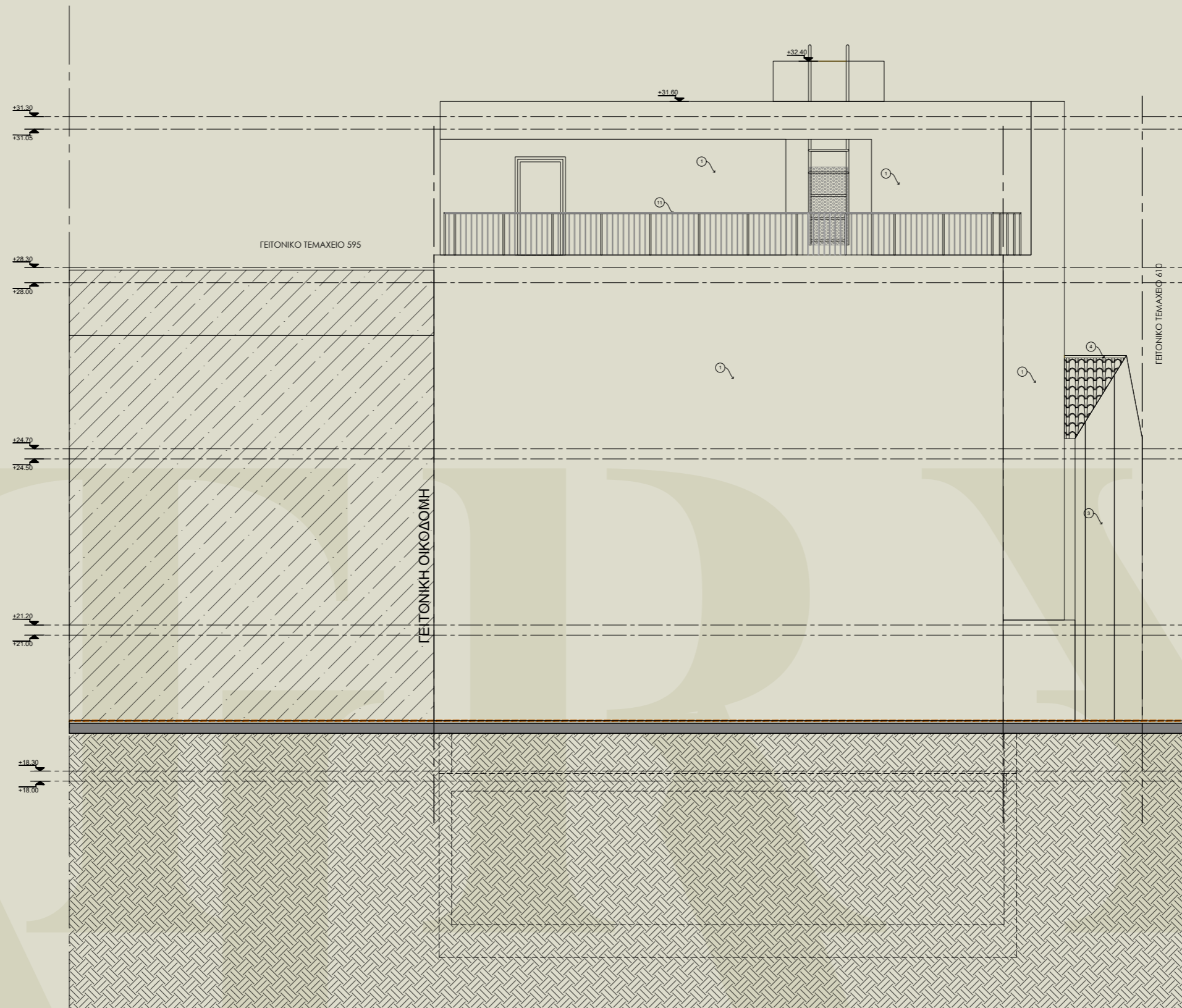
ΣΥΝΟΛΙΚΗ ΠΡΟΣΟΦΗ ΓΕΙΤΟΝΙΚΩΝ ΚΤΙΡΙΩΝ/ ΒΟΡΕΙΟΔΥΤΙΚΗ ΟΨΗ / ΟΨΗ 1/ ΚΑΙΜΑΚΑ 1:200



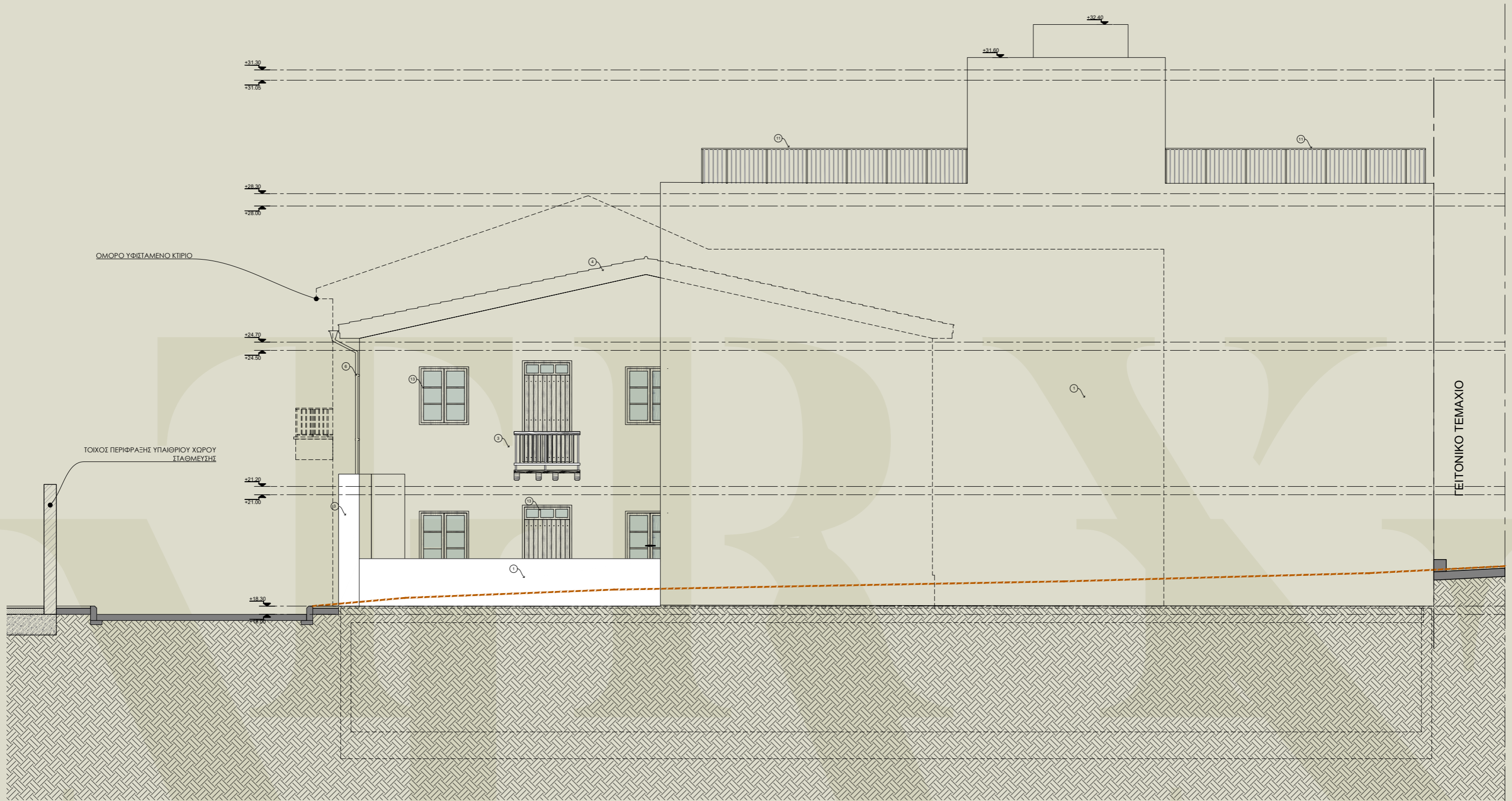
ΛΙΚΗ ΠΡΟΣΟΦΗ ΓΕΙΤΟΝΙΚΩΝ ΚΤΙΡΙΩΝ/ ΒΟΡΕΙΟΔΥΤΙΚΗ ΟΨΗ / ΟΨΗ 1



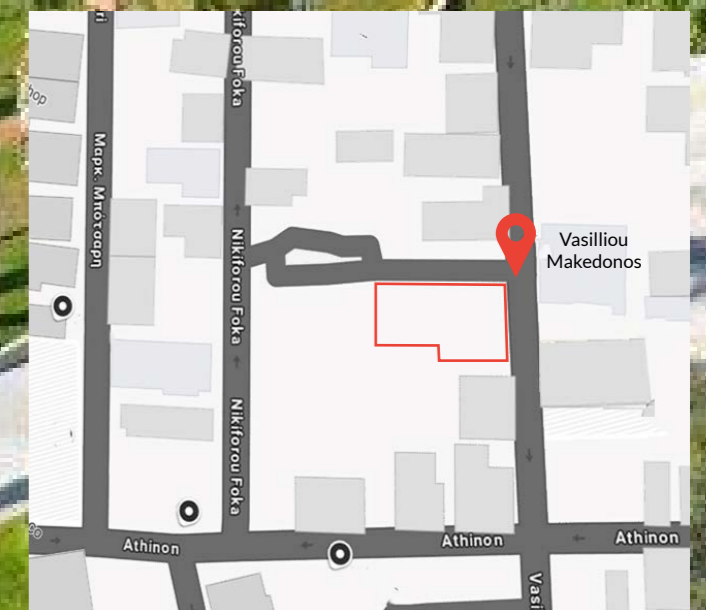
ΝΟΤΙΟΔΥΤΙΚΗ ΟΨΗ/ ΟΨΗ 2



ΝΟΤΙΟΑΝΑΤΟΛΙΚΗ ΟΨΗ/ ΟΨΗ 3



Limassol is a city defined by its balance of tradition and progress. With its coastal charm, cultural richness, and steadily growing urban landscape, it stands as one of Cyprus's most dynamic and forward-thinking destinations. Elegant architecture, thriving businesses, and a strong connection to its heritage make Limassol a place where quality of life and opportunity naturally align.





POTAMITIS | NICOLAOU


ARCHITECTS

Agora Anexartisias , Shop 21 , Limassol , 3036

info@pnarchitectscy.com

99 442359 | 97 741960

www.pnarchitectscy.com



Agora Anexartisias,
Shop 21, Limassol,
3036, Cyprus.

T: 99 442359 |
97 741960

www.pnarchitectscy.com
info@pnarchitectscy.com